

**ELISOF**  
Engineering

Smart Engineering. Safe Solutions

# ELISOF Engineering

Swiss Engineering & Validation for Safety-Critical  
Mechatronics

Connecting Swiss engineering excellence with global precision  
manufacturing to deliver certified, industrial-ready solutions.



# The Challenges Facing European Engineering Teams

European innovators face mounting pressure as regulatory demands intensify and development cycles accelerate. Engineering teams struggle to balance certification requirements with the need for rapid, cost-effective product development.



## Regulatory Complexity

Increasing certification and regulatory pressure across CE, ISO, and IEC standards requires specialized expertise and rigorous documentation.



## Prototyping Bottlenecks

High prototyping costs and extended lead times slow innovation cycles and delay market entry for new products.



## Talent Shortage

Critical shortage of senior systems engineers and functional safety experts limits development capacity and project quality.



## Manufacturing Gaps

Quality inconsistencies and communication challenges with overseas manufacturing partners create risk and rework.

# Swiss Precision for Certified, Industrial-Ready Products

## What We Deliver

ELISOF Engineering bridges the gap between European design excellence and global manufacturing capabilities, providing comprehensive engineering and validation services.

Our integrated approach ensures your products meet the highest standards for safety, quality, and regulatory compliance while optimizing development timelines and costs.

## Core Services

- Complete systems engineering, architecture design, and V&V processes
- Functional safety concepts, risk analyses, and comprehensive CE documentation
- Seamless coordination with vetted manufacturing partners across Asia
- Swiss-based quality assurance with transparent, multilingual communication



# A Growing Need in Robotics & Automation

The European robotics and automation sector is experiencing unprecedented growth, creating significant opportunities for specialized engineering services that can navigate complex certification landscapes.

€30B+

## Market Size

European robotics and automation market value, expanding rapidly across industrial and collaborative robotics sectors.

1000s

## SME Demand

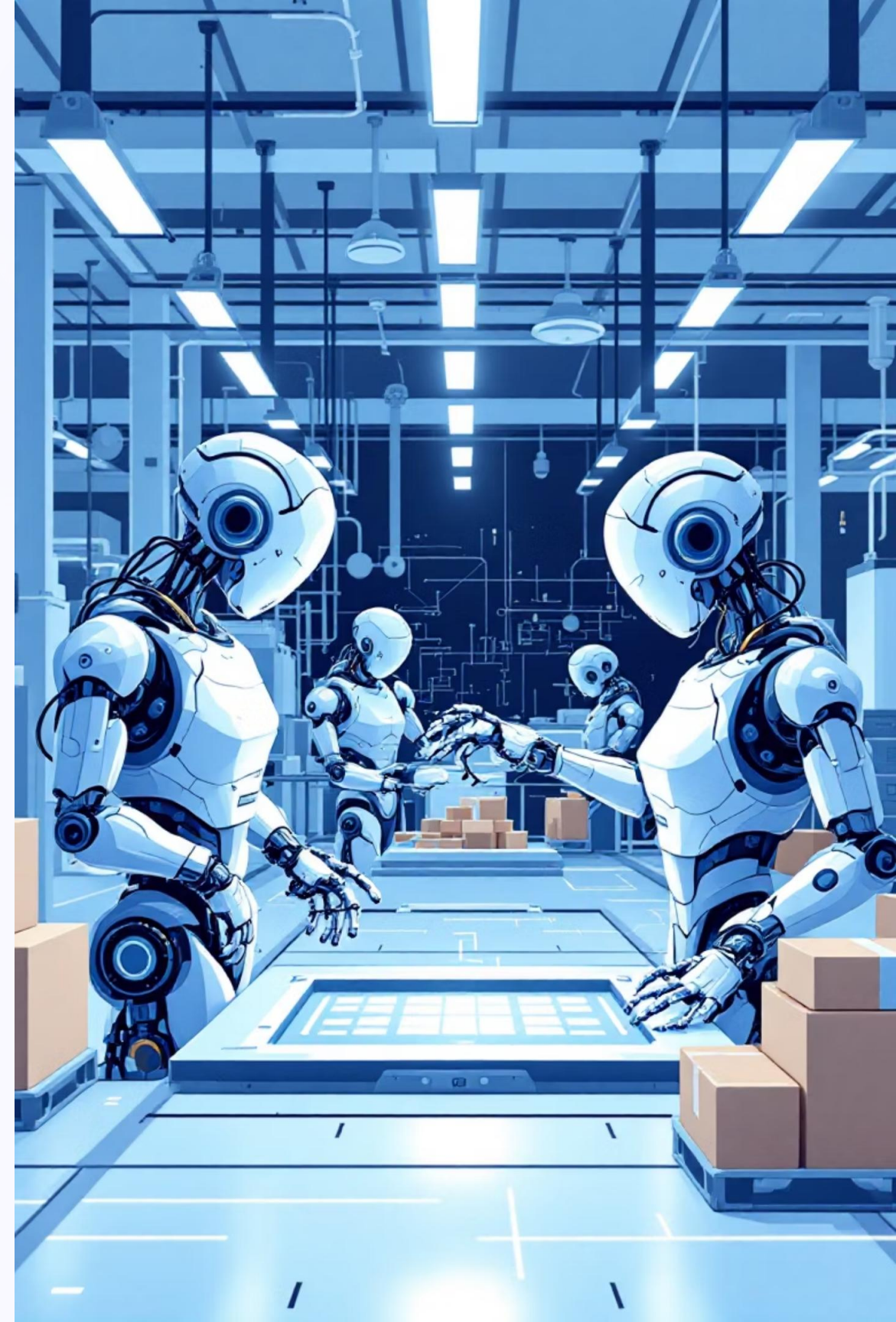
European SMEs lacking dedicated systems and safety engineering resources for product development.

40%

## Complexity Growth

Year-over-year increase in mechatronic system complexity driving demand for specialized engineering expertise.

As companies increasingly combine EU design standards with global manufacturing capabilities, the need for expert engineering validation and coordination has never been greater.



# Flexible, Project-Based Engineering Services

Our business model adapts to your development stage and project requirements, providing scalable engineering support from concept through production and beyond.



## Engineering & Validation

Comprehensive systems engineering, requirements traceability, architecture design, and full verification and validation cycles for safety-critical mechatronic systems.



## CE Certification Packages

Complete certification documentation, risk assessments, functional safety analyses, and technical files ensuring compliance with EU regulations and international standards.



## Manufacturing Coordination

End-to-end management of prototype and small-series production with trusted Asian manufacturing partners, including quality oversight and logistics coordination.



## Long-Term Support

Ongoing engineering partnership through design reviews, continuous improvement programs, and technical support as your products evolve and scale.

# Certified, Structured, and Traceable Engineering



## Safety Frameworks

ISO 12100 machinery safety, ISO 13849 control systems, and IEC 61508 functional safety standards guide every project phase.



## Digital Integration

Structured digital workflows seamlessly linking design teams, suppliers, and quality assurance processes.

## Our Technical Foundation

We apply internationally recognized safety frameworks and structured engineering methodologies to ensure every project meets the highest standards for traceability, compliance, and quality.



## Requirements Traceability

Complete traceability from initial requirements through architecture, design, testing, and final documentation.



## Deep Expertise

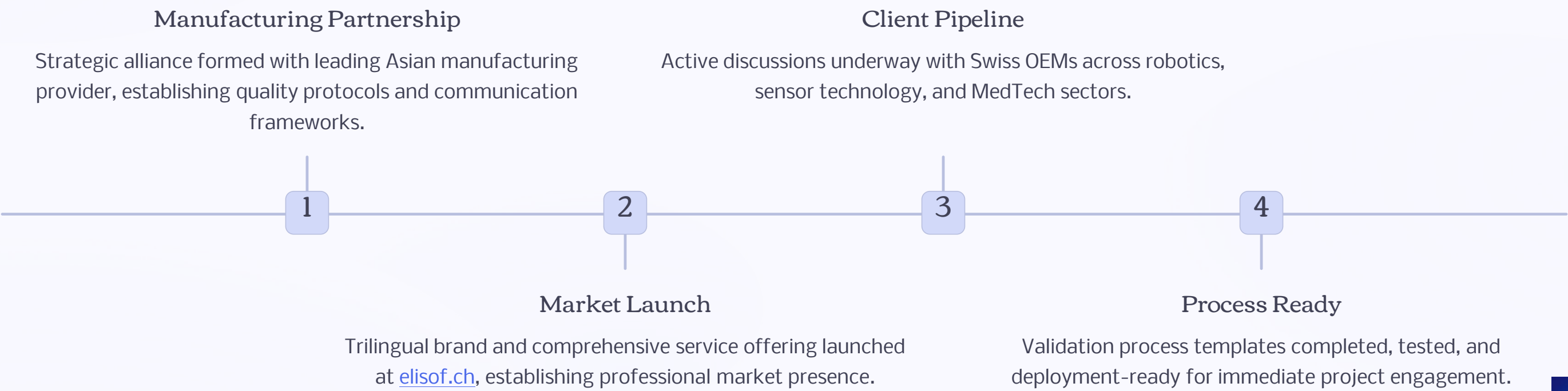
Specialized knowledge spanning robotics, sensor systems, control algorithms, and advanced mechatronic integration.





# Building the Engineering & Validation Bridge

ELISOF Engineering has established the foundation for seamless cross-continental engineering services, with active market presence and growing client engagement across Switzerland and Europe.



# Leadership



## Mustafa Oezbas

### Founder & Lead Systems Engineer

Mustafa brings over 15 years of specialized expertise in mechatronics, safety-critical systems, and rigorous product validation to ELISOF Engineering.

- MSc Mechanical Engineering, ETH Zürich
- CAS Safety Engineering, ETH Zürich
- Proven track record developing and validating complex mechatronic systems across aerospace and industrial automation sectors
- Former senior engineering roles at Thales and Johnson Electric, leading safety-critical product development
- Supported by a global network of specialized engineering and manufacturing partners across Europe and Asia





# Our Vision

To make engineering, validation, and manufacturing truly seamless across continents

## Enabling Innovation

Empowering European innovators to focus on breakthrough product development while we handle the complexity of certification and manufacturing coordination.

## Ensuring Safety

Delivering products that meet the highest international safety standards, protecting end users and building market trust.

## Accelerating Time-to-Market

Streamlining development cycles through expert engineering support and efficient global manufacturing partnerships.

# Strategic Partners & Collaboration Opportunities

We're seeking to expand our network of strategic partnerships to create even greater value for European innovators navigating the complex landscape of modern mechatronic product development.



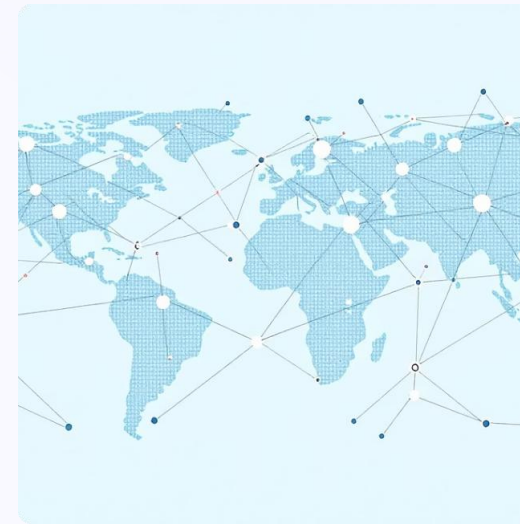
## OEM Partnerships

Collaboration with robotics and automation original equipment manufacturers seeking certified engineering and validation support.



## Engineering Collaboration

Joint engineering projects with innovative companies requiring specialized systems engineering and functional safety expertise.



## Innovation Networks

Access to international innovation ecosystems, research institutions, and technology transfer programs across Europe and beyond.



## Development Projects

Joint development and validation initiatives for next-generation mechatronic products requiring rigorous certification pathways.

[Learn More at elisof.ch](https://www.elisof.ch)

[Contact Us](#)